

110V POWER SUPPLY

GROUND SCREW

MOTOR #4
GROUND DOWN COMMON UP

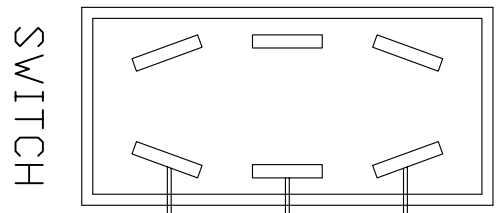
MOTOR #3
GROUND DOWN COMMON UP

MOTOR #2
GROUND DOWN COMMON UP

MOTOR #1
GROUND DOWN COMMON UP

GENERAL NOTES:

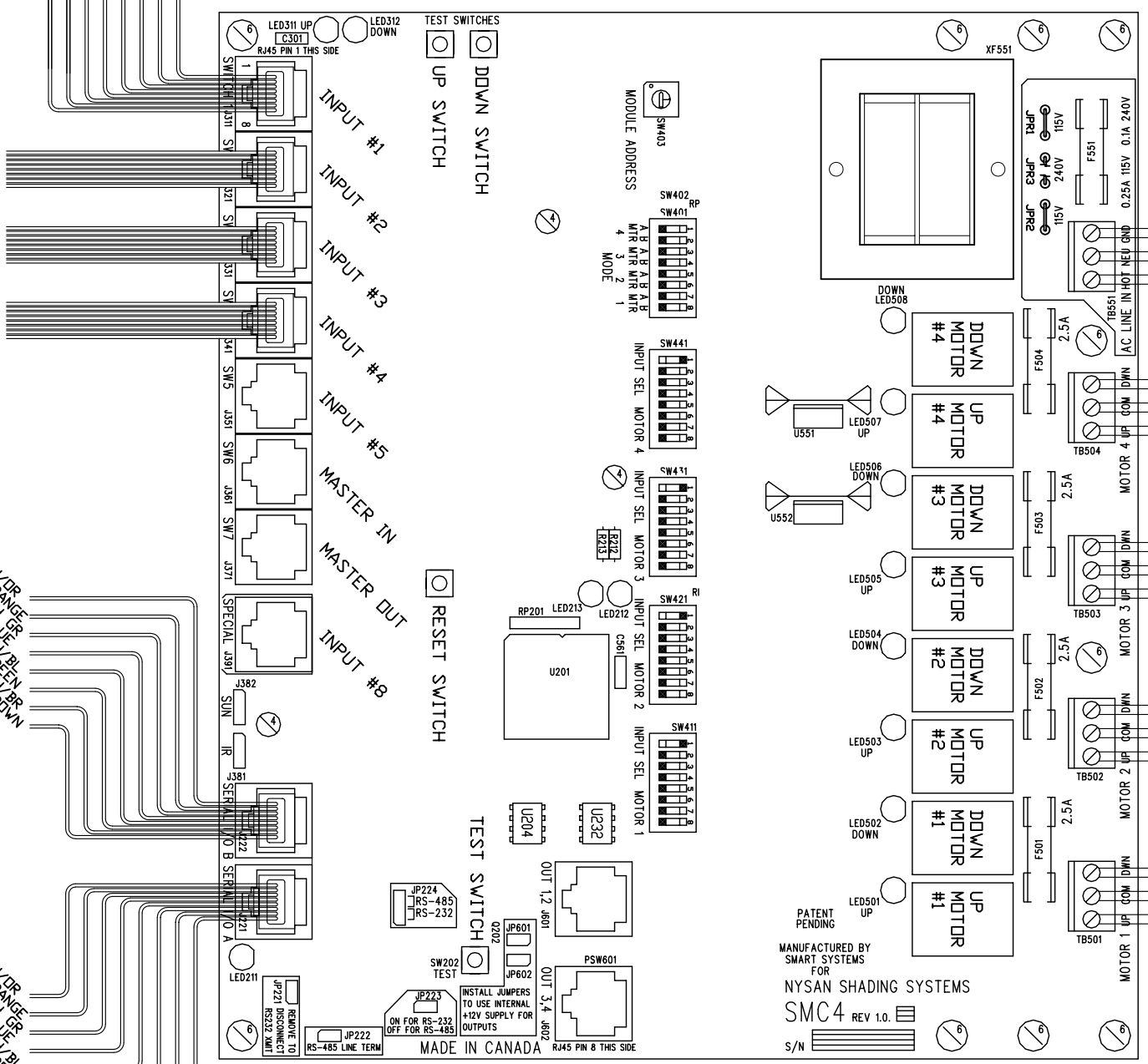
1. ALL WIRING TO BE COMPLETED BY A CERTIFIED ELECTRICIAN
2. ALL LOW VOLTAGE WIRE CAT 5 - 4 PAIR WIRE TERMINATED TO RJ45 JACKS
3. ALL HIGH VOLTAGE WIRE TO BE 14GA (OR AS SPECIFIED BY LOCAL BUILDING CODES FOR HIGH VOLTAGE WIRE
4. SHADE MOTORS ARE NOT TO BE WIRED IN PARALLEL



PIN 1 WH/OR
PIN 2 DRANGE
PIN 3 WH GR
PIN 4 BLUE
PIN 5 WH/BL
PIN 6 GREEN
PIN 7 WH/BR
PIN 8 BROWN

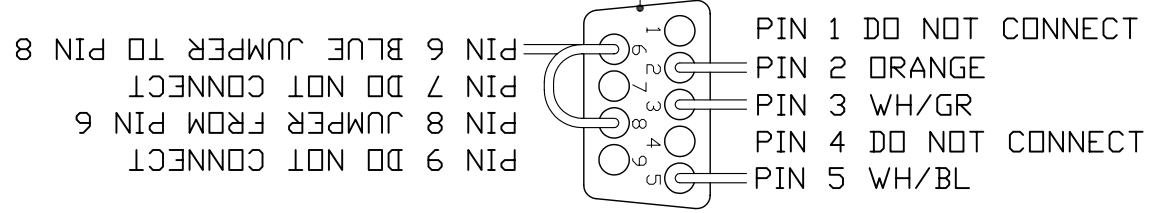
PIN 1 WH/OR
PIN 2 DRANGE
PIN 3 WH GR
PIN 4 BLUE
PIN 5 WH/BL
PIN 6 GREEN
PIN 7 WH/BR
PIN 8 BROWN

PIN 1 WH/OR
PIN 2 DRANGE
PIN 3 WH GR
PIN 4 BLUE
PIN 5 WH/BL
PIN 6 GREEN
PIN 7 WH/BR
PIN 8 BROWN



MANUFACTURED BY SMART SYSTEMS FOR NYSAN SHADING SYSTEMS
SMC4 REV 1.0
S/N

RS 232 PORT FOR AV INTERFACE



1 RS 232/485 AV INTERFACE

114 Kirby Street
Garland, TX 75024
PH (972) 494-5941
FAX (972) 267-5104

NYSAN SHOP DRAWINGS
CONTROL OF RS232/485 AND SWITCH MATRIX BOARDS
WIRING DETAILS

SCALE	DRAWN
NTS	ALEX
DATE	19/09/03
WORK ORDER NO.	N/A
DRAWING NO.	MA-AV-2