

BLOCKING BY OTHERS _____

NYSAN CEILING MOUNTED 4" MOTOR SHADE SYSTEM _____

2 3/8" ALUMINUM TUBE _____

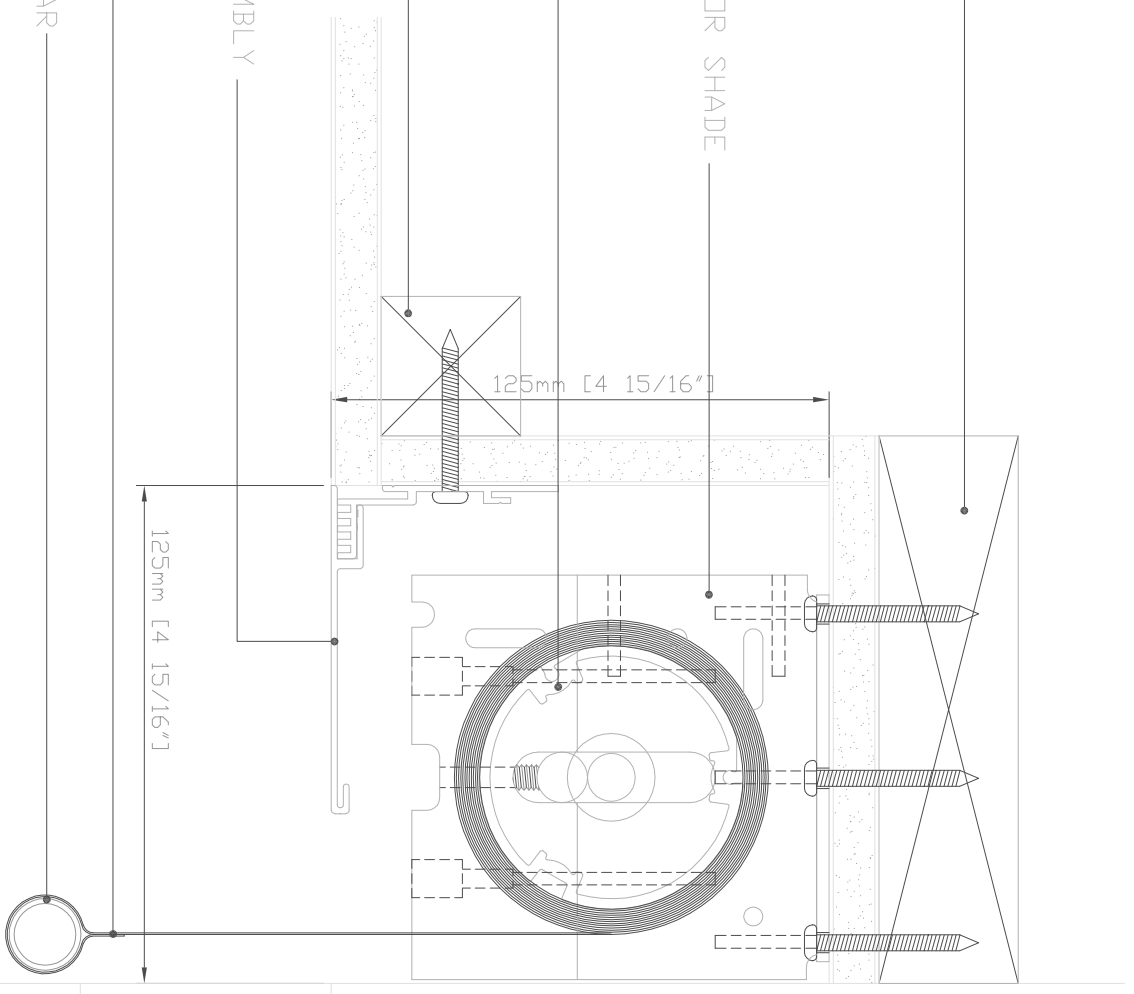
BLOCKING BY OTHERS _____

ALUMINUM CLOSURE PANEL ASSEMBLY _____

BACK ROLL FABRIC PANEL _____

EXTRUDED ALUMINUM FLAT HEMBAR _____

1 ^{1/2} CEILING MOUNTED 4" MOTOR SHADE IN AN EXISTING POCKET



114 Kirby Street
 Garland, TX 75024
 PH (972) 494-5941
 FAX (972) 267-5104

SOLARE SHOP DRAWINGS
 4" MOTOR SHADES
 CEILING MOUNT BRACKET
 IN A POCKET W/ CLOSURE

scale 1:2
 drawn KYLE

date 03/21/07

work order no.

drawing no. MDT-04-C